

Core.

Desking system



senator

Introducing Core from Senator.

Over the years senator has designed and developed numerous desking collections which have met the demands of the modern office environment.

Senator's latest development, Core, is a dynamic workspace solution which allows users to work individually or in collaboration with others, encouraging a more effective use of the office environment.

senator





Core is a versatile desk system with a fresh clean aesthetic based around a horizontal beam construction which provides structure and rigidity and allows for the fixing of the various system elements.

The flexibility designed into the system allows Core to provide a comprehensive range of different applications. Core is available as a four leg version, cantilever frame or continuous bench using simple, cost effective, flexible components and legs can be shared wherever necessary.



Core

Desk screens further enhance the system and are available as a simple pinnable version through to framed system screens with tool rails, fabric and glazing options. High capacity cable baskets cater for all electrical and IT requirements.

Core has been developed to cause the minimum impact on the environment. The product has been designed for a maximum working life and whenever possible reclaimable materials are used. Core is up to 100% recyclable at the end of its useful life and is made from 55% recycled materials.





Core

Available as an A Frame model, Core incorporates an splayed leg design which provides the system with a reinforced strength whilst bringing a visual lightness to single or grouped workstations.

The combination of a beam and casting enables numerous configurations to be specified for a reasonable cost. Its is available with a variety of single desk top options and comprises of non-handed components, thus simplifying installation. Core 4 leg offers a cable management system that can incorporate a wire management system which is as light or intensive as required through the choice of numerous underworksurface cable solutions.





Core

Alternatively core is available with a cantilever leg option which combines elegance and practicality.

Being highly flexible and easy to configure makes the core desking system adaptable to almost any working environment, whether it be an individual desk or collaborative team structure.









Core cantilever incorporates built in vertical, three way segregated cable management as standard which can be accessed from either the inside or outside of the leg. Desk top screens are available in a variety of fabrics, sizes and shapes to customise an individuals working domain.

As an overall range Core is suitable for entire office environments, working equally as well as a stand alone desk, a 120° cluster or as a side-by-side benching system

Core

A selection of desking configurations offered within the Core range, highlighting the extensive flexibility of this product.

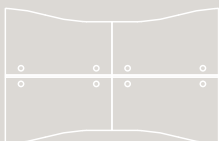
Page 003

Core 4-leg, four man bench system in Beech MFC with accompanying 3 drawer desk under, mobile pedestals. Fabric tool rail in Camira, New Aquarius, Galileo GA429 with task seating from the Fuse range.



Page 004–005

Four man, single wave, 4-leg Core bench system in Autumn MFC with fabric tool rail in Camira, New Aquarius, Pesto and with Autumn MFC facing desk under pedestals. Collection of Universal Storage including 12 cubicle bookcase units and side tambour cupboards. Chameleon meeting table in the background with Task and Visitor seating from the Fuse collection.



Page 006

Cluster of 3 120 degree, 4-leg Core workstations in Maple MFC with 'D' end and rectangular desk-end meeting tables. Two 3 drawer, static desk high pedestals in Maple MFC. Fabric tools rails in Camira, New Aquarius, Pascal JA434. All seating from the Dash collection.



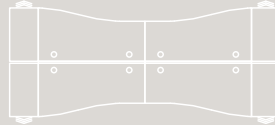
Page 007

Cluster of 6 120 degree, 4-leg Core workstations in Maple MFC with fabric tool rails in Camira, New Aquarius, Pascal JA434 and accompanying accessories. Task seating from the Dash collection.



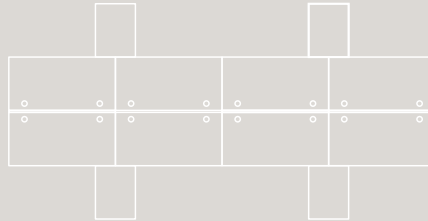
Page 008

Core 4-leg, four man bench system with single wave tops in White MFC with 3 drawer, desk under pedestals. At the ends of the system sit 3 drawer desk high pedestals with open storage boxes. Complementing fabric tool rails in Camira, New Aquarius, Pascal JA434. All seating from the Fuse collection.



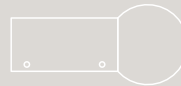
Page 009

Eight man, 4-leg core bench system with rectangular worktops and rectangular returns in Maple MFC. Dividing screen tool rails and 3 drawer desk under pedestals with Maple MFC facings. 3 drawer side filer storage unit sits to the rear of the desking with Maple MFC top. All seating is from the Fuse range.



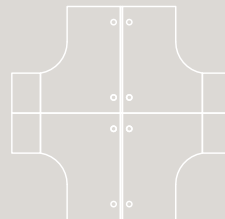
Page 010

Single cantilever leg workstation in Oak MFC with round desk-end meeting table, wooden modesty panel and 3 drawer metal pedestal. Enigma task seating with Trillipse Motion visitor chairs.



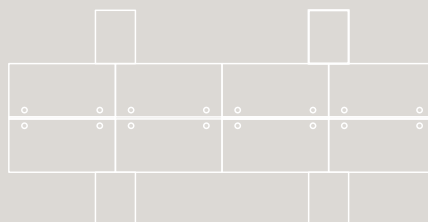
Page 011

Cluster of four radial workstations with cantilever leg in Oak MFC, featuring static, 3 drawer desk high pedestals and fabric screens in Camira, New Aquarius, Pesto. Situated in background is a 3 drawer, side filer storage unit with Oak MFC worktop. All seating is from the Fuse range.



Page 012–013

Eight man bench system with cantilever leg, rectangular worktops and returns in Maple MFC. Complementing 3 drawer pedestals sit under the desks with fabric tool rails in Camira, New Aquarius, Pesto. To the rear of the desking sits a 3 drawer side filer storage unit with a Maple MFC top. All seating is from the Fuse collection.



Senator International
Altham Business Park
Accrington Lancashire
BB5 5YE
T +44 [0]1282 725000
F +44 [0]1282 725039

London Showroom
11-13 Melton Street
London
NW1 2EA
T +44 [0]207 388 7621
F +44 [0]207 388 3121

Senator b.v.
Showroom
Huis ter Heideweg 58-1
3705 LZ ZEIST (NL)
T +030 698 1030
F +030 698 1039

Senator GmbH
Kostenlose Rufnummer
08001-736286

Senator International Inc.
1630 Holland Road
Maumee
Ohio 43537
USA
T 1 [419] 887 5806
F 1 [419] 887 5805

Chicago Showroom
Suite 3-123
222 Merchandise Mart Plaza
Chicago IL 60654
USA
TOLL FREE 1 [888] 887 5806

Senator
Dubai
United Arab Emirates
T +44 [0]1282 725082

Senator International Inc.
sales@senator.co.uk
www.senator.co.uk